

Brooks Expert Support Tool (BEST) Quick Start & Upgrade Guide

Software Version 5.14.0.0

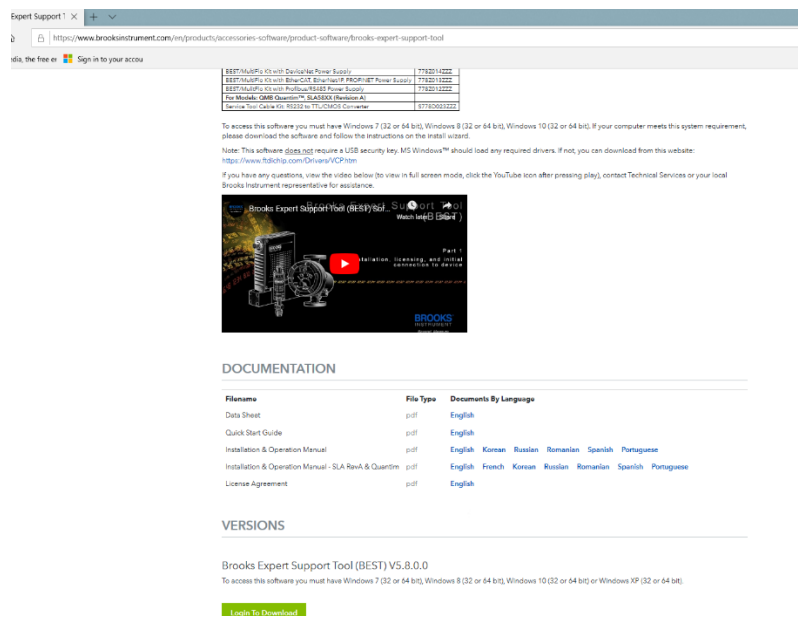
March 06, 2024

See also the BEST User Manual for more details about installation.

Your exact versions shown may vary.

Your exact screen appearances may vary. Your versions may vary.

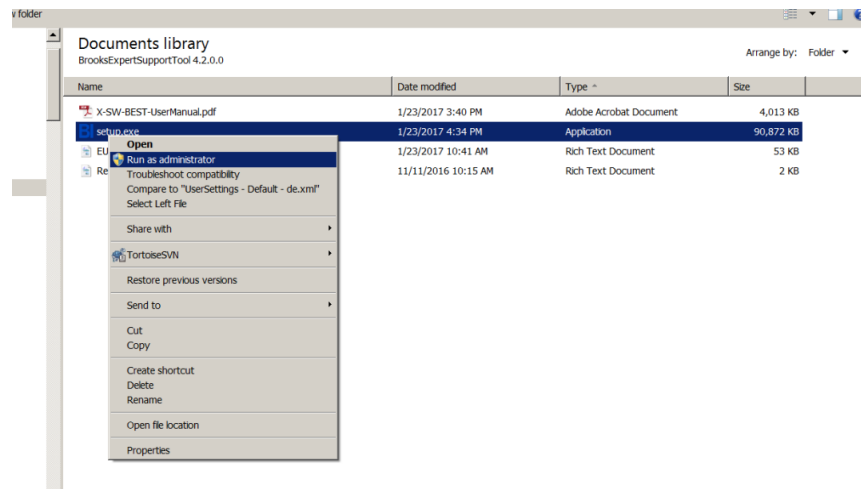
1.) Download the Brooks Expert Support Tool from the Website and save file to your hard drive.



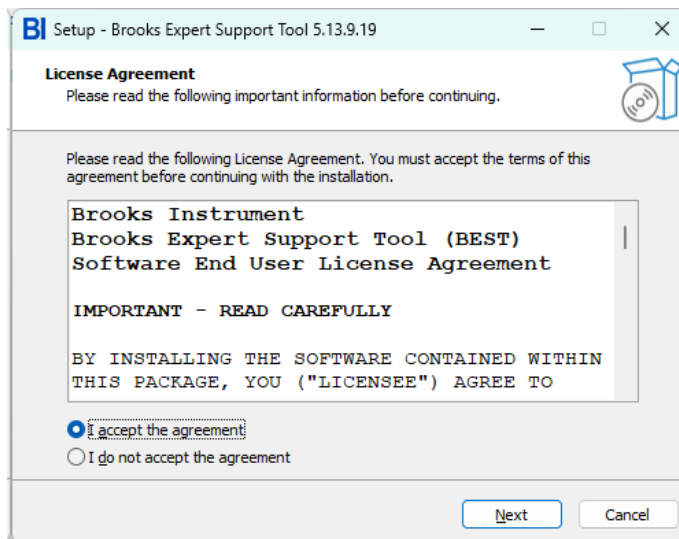
Link: <http://www.brooksinstrument.com/products/accessories-software/product-software/brooks-expert-support-tool>

2.) Unzip the *.zip file on your local computer's hard drive.

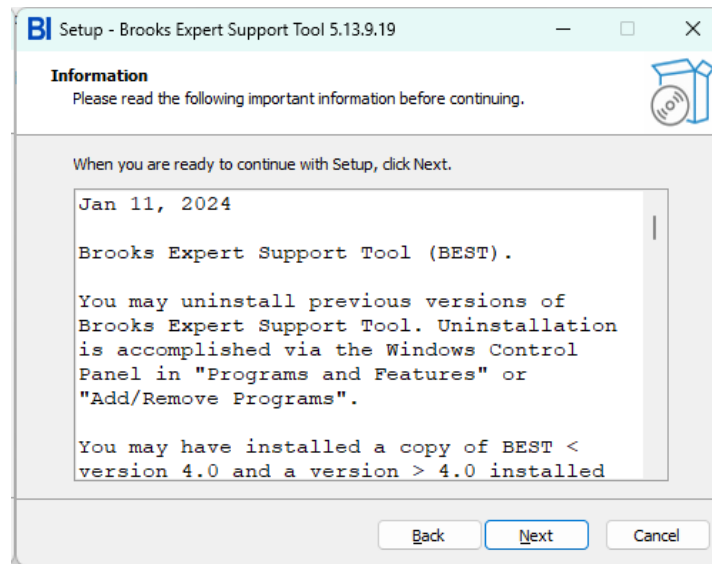
3.) Execute the setup.exe (right click on the executable and run as administrator):



4.) Read and accept the license agreement and click next:

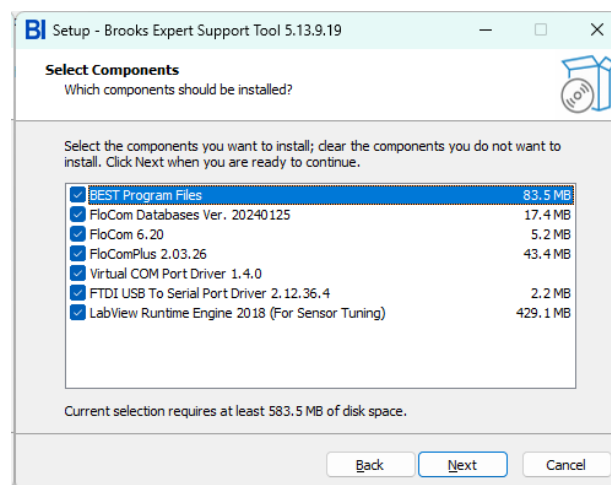


5.) Read the text from the ReadMe file, then click Next:

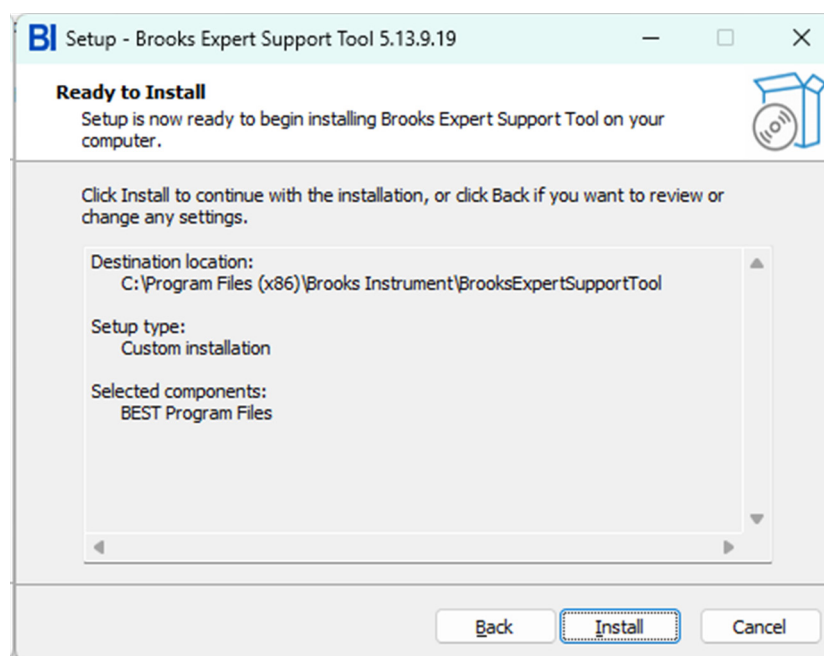


6.) If you need to maintain an existing version of FloCom (such as with CopyExact), please see additional instructions in the user manual. Deselect Virtual COM Port Driver if you don't need it (see user manual). This is required for use with the VDM300 and GP200 devices. Also, note that the Labview Runtime engine is only required to be installed if you intend to do sensor tuning. It can also be installed at a later time.

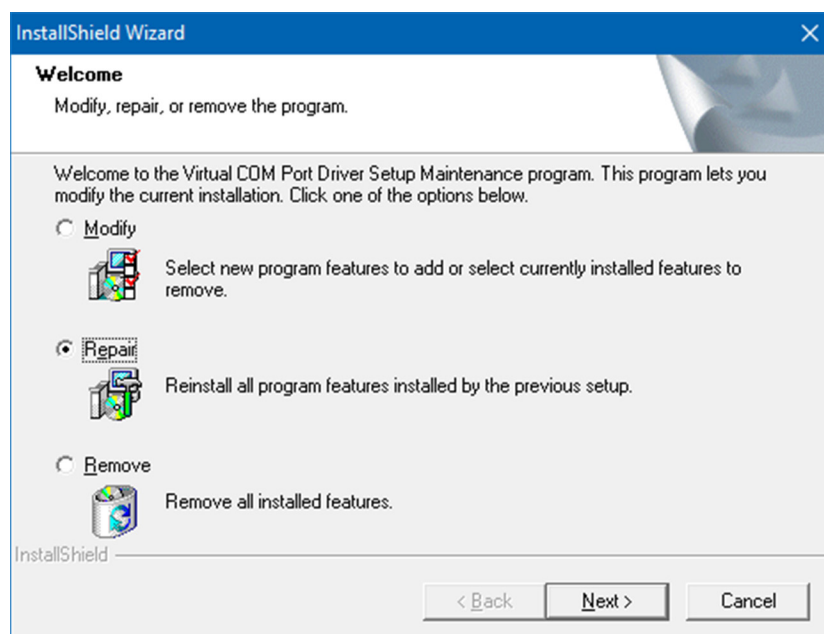
Click Next.



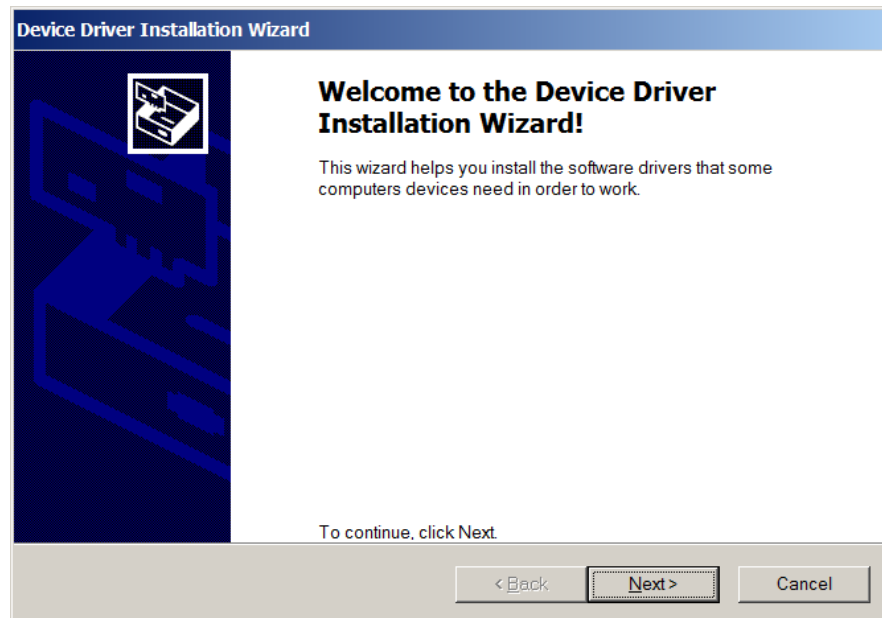
7.) Click Install.



8.) If the maintenance window appears, click repair:



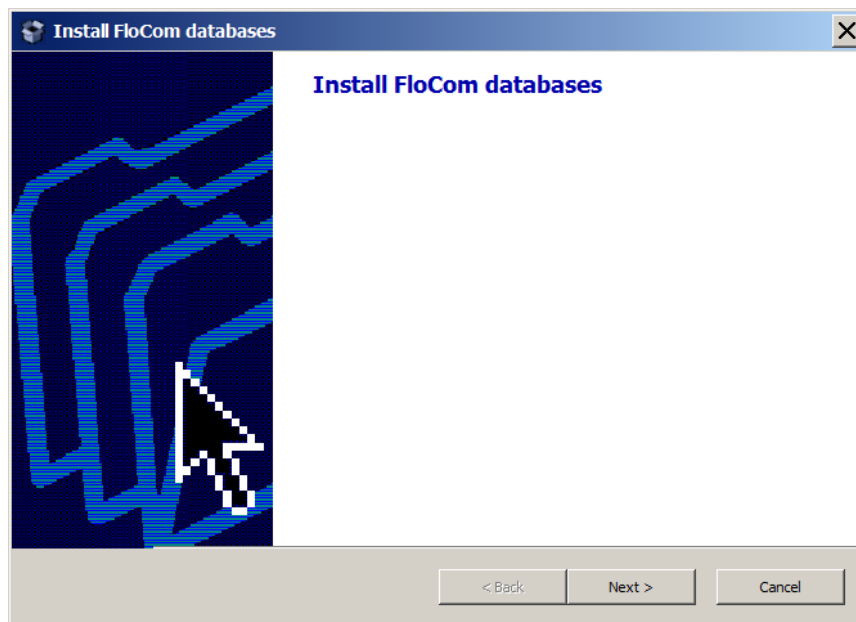
9.) If the driver installation windows appears, click Next:



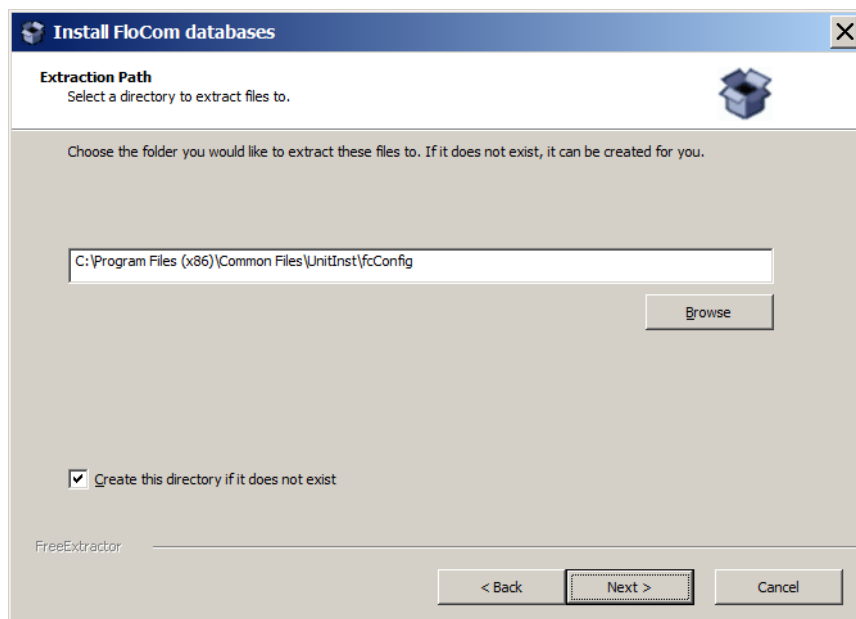
10.) When the driver installation completed window appears, click Finish:



11.) Click Next to install FloCom databases:



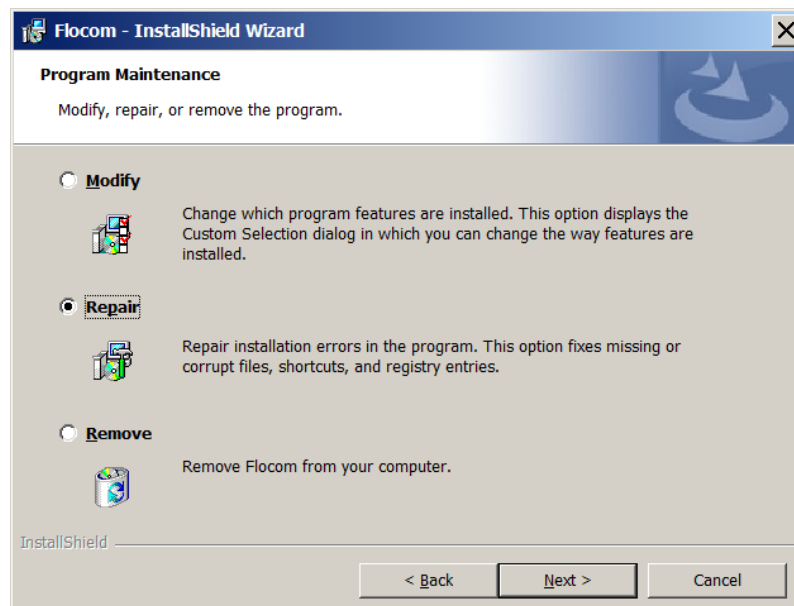
12.) Click Next (do not change the install folder):



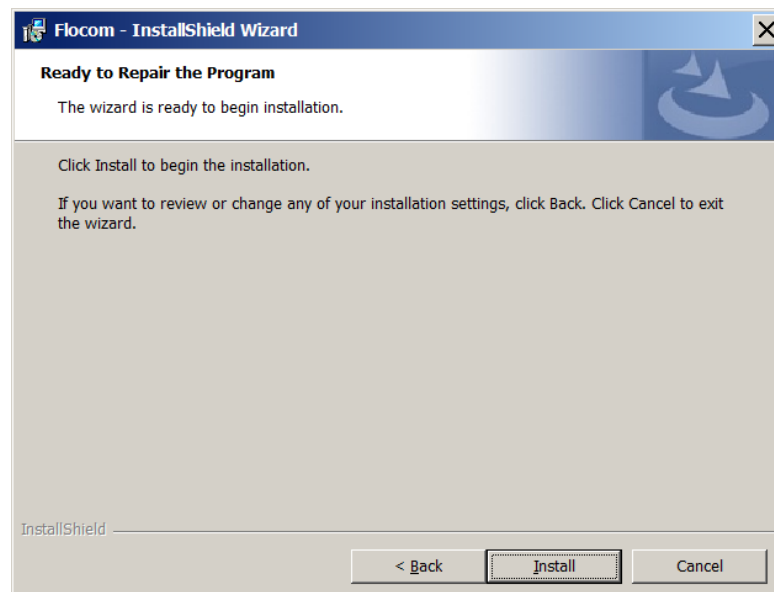
13.) Click Next to install FloCom:



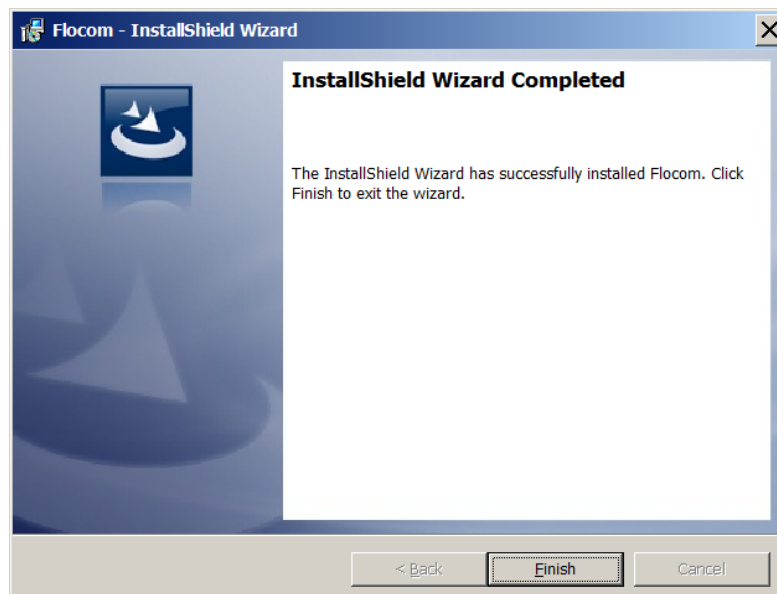
14.) IF the maintenance screen appears, click Repair and then Next:



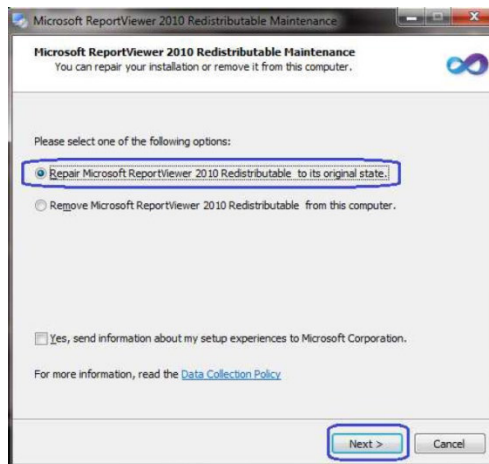
15.) Click Install:



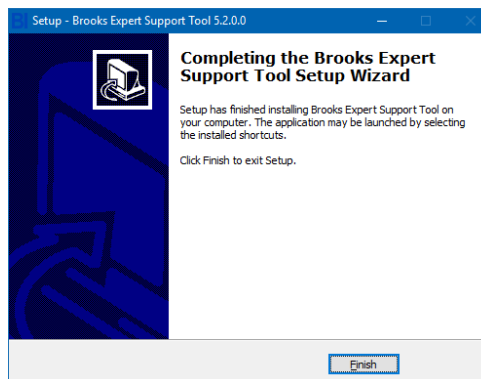
15.) Click Finish:



17.) If this window appears, click repair and Next:



18.) Click Finish to complete the installation:



19.) A desktop short cut will be added to your Windows desktop. Double click it to start BEST:



20.) See the user manual for instructions to connect your device and use BEST with it.